



# Fast & Studios Project & Portfolio Planning Software

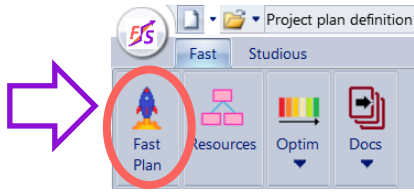
**Fast & Studios** is a planning tool enabling generating automatically a schedule, workload, WBS and full pack of project documents and indicators from a compact description of your project or portfolio.

**Fast & Studios** saves you a lot of time in the definition of your project and will improve drastically the quality of all your project information.

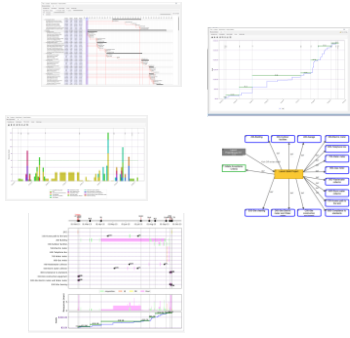
## Overview

Fill in project or portfolio minimal description

Launch Fast & Studios building engine



Get a comprehensive set of planning viewpoints, documents, exports



## Key Features

- ✓ Smart Project/Portfolio information description
- ✓ Automated generation of activities
- ✓ Activities inputs/outputs generation
- ✓ Precedence links generation
- ✓ Gantt generation
- ✓ WBS generation
- ✓ Project level synthesis
- ✓ Refinement of reviews constraints
- ✓ Available resources management
- ✓ MS Project® export
- ✓ Documents generation (WBS, SOW)
- ✓ Project revisions and variants diff



*This information booklet applies to Fast&Studios 5.2 release and over*  
*Fast & Studios is a trademark*



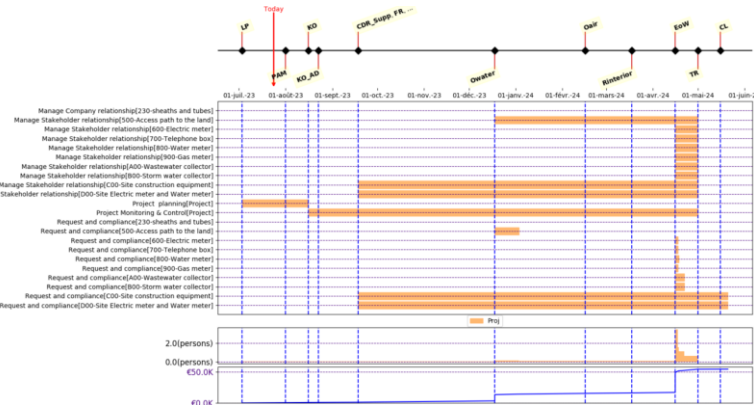


# Be **STUDIOUS**

## Collaboration through viewpoints

Each actor of the project team gets adapted viewpoints to check plan or tune the project w.r.t. his own constraints. This is the basis for a collaborative convergence and commitment to the project definition. Supported viewpoints include:

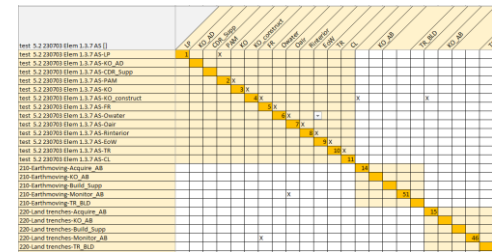
- Overall view and synthesis
- Viewpoint per product
- Viewpoint per job function
- Viewpoint per organization
- Viewpoint per Worpackage



Example of viewpoint for all activities of project monitoring and control

## Manage Reviews schedule

- Define specific product reviews
- Deselect product reviews you don't need
- Define precedence between reviews at every product level
- Define precedence between reviews and activities



Def [v] [v] Fill INFO [v] Risks [v]

- Specific Reviews export
- Specific Reviews import
- Selected Reviews export
- Selected Reviews import
- Selected Reviews import by name

Reviews management menu

Excerpt of a table of precedence between reviews

## Generate project documents

- Project level synthesis
- Product breakdown structure
- Delivered Document List
- Delivered Items List
- Customer Furnished Items
- Workpackages description
- Work Breakdowns Structure document
- Statement of Work template for each contract

Docs [v]

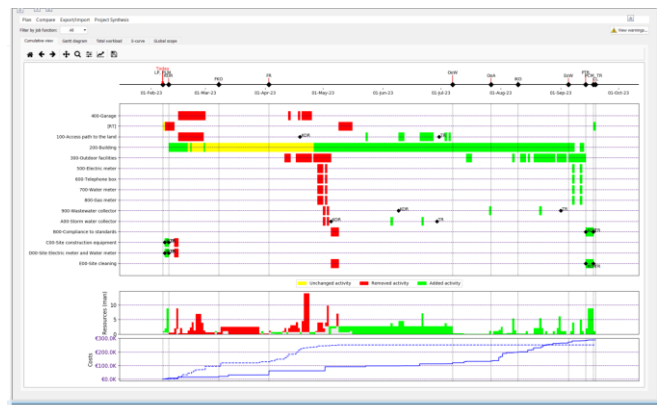
- CFI Documentation export
- DDL Documentation export
- DIL Documentation export
- WBS Documentation export
- WPD\JobFunction Matrix export
- WP Documentation export
- MS Project export

Exports menu

## Diff between Variants and Revisions

Compare project variants and revision

- Record your current project status
- Compare with another record corresponding to another variant or a previous revision of your project



Sample of project comparison between two house project variants

## Tune Activities attributes

- Activities attributes include starting date, ending date, earliest possible start, latest possible end, cumulated workload
- Check all activities attributes in Excel format
- Modify activities attributes in Properties view
- Modify activities attributes from local Gantt view
- update plan accordingly with Activities attributes changes

## Product interfaces

- Define product interfaces in N2 matrix
- Benefit from Interface documents inputs and outputs in advanced Lifecycle libraries

## Check project information

Project information consistency is checked from many aspects

- Activities without workload
- Cycles between a set of activities
- Items and documents not produced or consumed

## Risk analysis support

- 5M/7M standard risks folders
- Risk identification for generated activities
- Risk description and assessment for activities
- Risk mitigation and planning impact



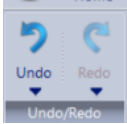
Excerpt of a table supporting Risk identification

Risks management menu

Risks [v] Portfolio [v] Project C [v]

- RBS export
- RBS import
- Risks identification export
- Risks identification import
- Risks description export
- Risks description import
- Risks mitigation export
- Risks mitigation import

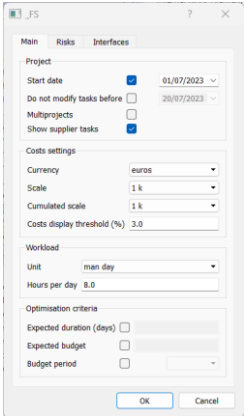
# Miscellaneous



## Undo/Redo

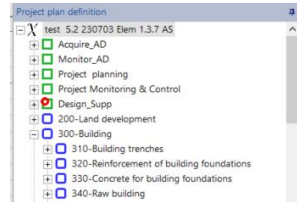
- Collaborative Undo/Redo
- History of all changes made with their authors

Undo Redo menu



## Project Config menu

- Select units and scale for project information (time, costs, workload, currency)
- Define project start date
- Select optimization criteria



Sample of treeview display – Here Product Breakdown structures and activities

Project Configuration menu

## User and data administration

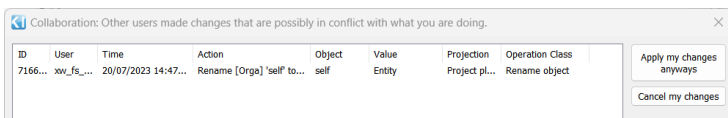
- Get a workspace that all your teams can access
- Manage users' rights per workspace: read-only, modification, coordination

## Interfaces with other tools and formats

- Export to MSProject is available
- Export to Excel format is possible for each viewpoint
- Custom exports with our python API

## Collaboration

- Enable multi-access to the database and manage collisions
- Keep track of any modification by any user
- Multiple parallel access and changes to the model
- Notification message to manage conflictual actions
- Refresh to update modifications by others



Conflict management window when several users work on single object

## Key Advantages

- Intuitive tool with short learning curve
- Structured description of your project information
- Collaborative at all stage
- Consistency of the planning w.r.t all dimensions (product, life cycle, project logic, estimates, ...)
- Native traceability of all activities and their inputs/outputs w.r.t. initial project description
- Viewpoints adapted for the project team
- Workload profile per job function
- Documents automated generation
- Knowl how and expertise of support team

## Ergonomics

- Navigate in treeviews describing the main breakdown structures of your project
- Navigation: show location of an object, search by name, type, attributes... go to object location in any view and viewpoint
- Visualize parent objects
- Visualize and modify attributes of any object
- simple click for properties, double click for updating viewpoint
- Get the list of objects in the project for any type (activities, items, organization, job function, workpackage...)

## Processes description

- SIPOC** (Supplier, Input, Process, Ouput, Consumer) format description of processes
- Import Export mechanism from/to Excel
- Import several process libraries to cover several domains (software, hardware, mechatronics, construction)
- Specify detailed schedule of each Life Cycle (sequence of processes)
- Specify inputs and outputs for each process
- Benefit from advanced of the shelf libraries and modify them according to your own needs
- Modifying processes is only available with commercial licenses

ACTOR S	PROCESS S	INPUT name	level I	PROCESS OR REVIEW	TYPE	OUTPUT Name	level O	PROCESS C	ACTOR C
PROCESS	Analysis_DEF	Analysis_DEF_report	n						
SUPPLIER (N+1)	Design_Supp	System as designed	n						
PROCESS	Design	System as designed	n						
CLIENT (N-1)	Design	System as needed	n						
						Analysis_DEF_specification	n	Analysis_DEF	PROCESS
						Install plan	n	Acquire_AI	PROCESS
						Install plan	n	Install_IT	PROCESS
						Install plan	n	Install_Supp	PROCESS
						Install plan	(n+1)		SUPPLIER (N+1)
						System as designed	n		CLIENT (N-1)
				Design	internal	System as designed	n	Build_Bld	PROCESS
						System as designed	n	Build_Supp	PROCESS
						System as designed	n	Manage Company relationship	PROCESS
						System as designed	n	Manage Customer relationship	PROCESS
						System as designed	n	Manage Stakeholder relationship	PROCESS
						System as designed	n	Request and compliance	PROCESS
						System as designed	n	ICDR	PROCESS
						System as designed	n	ICDR_Supp	PROCESS
						System as designed	n	KO_AB	PROCESS
						System as designed	n	KO	PROCESS
						System as designed	n	TR	PROCESS
						System as designed	n	TR	SUPPLIER (N+1)
						System as designed	n	Design	PROCESS
						System as needed	(n+1)		SUPPLIER (N+1)

Sample of a SIPOC description for a design process

## Licensing modes

- Fast & Studios** is a client-server platform
- It is licensed as a cloud or on premise SAAS application under yearly or perpetual licenses
- Evaluation license with limited capabilities is free (100 tasks and reviews – limited space)
- Personal license for small projects (up to 500 tasks and reviews).
- Commercial license is available for 5 named users of an organization with one user max at a time.
- Several commercial licenses can share same workspace for fully collaborative work.



## Fast & Studios

Smart Plan based on Processes

25 rue du Maréchal Foch, 78000 Versailles

Tel. +33 (0)1 39 02 70 29

[contact@fastandstudious.com](mailto:contact@fastandstudious.com)

[www.fastandstudious.com](http://www.fastandstudious.com)